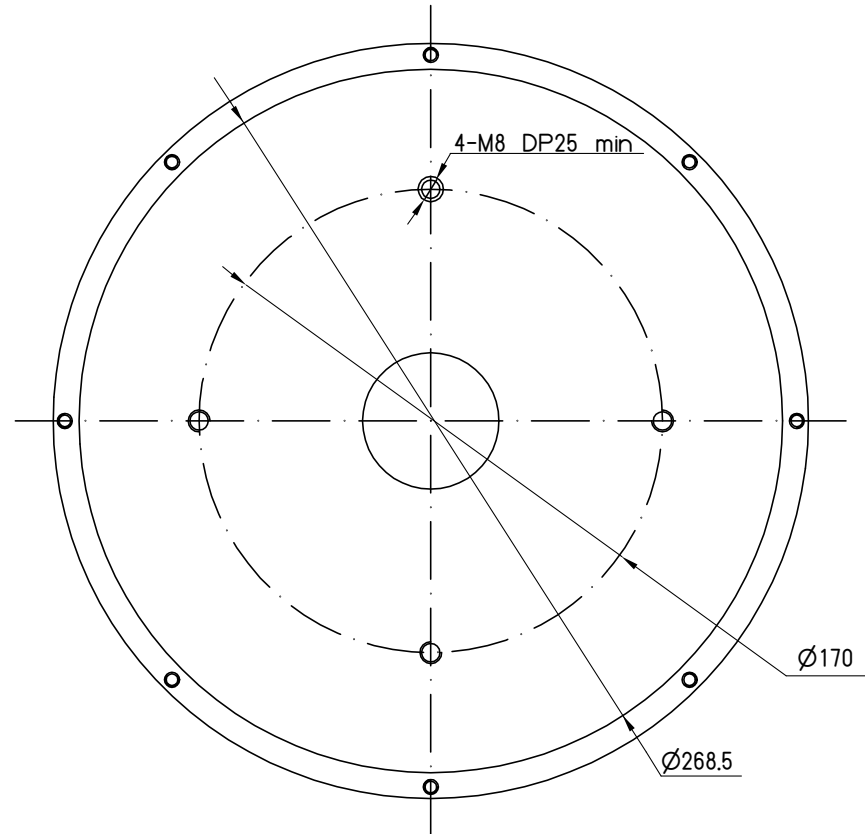
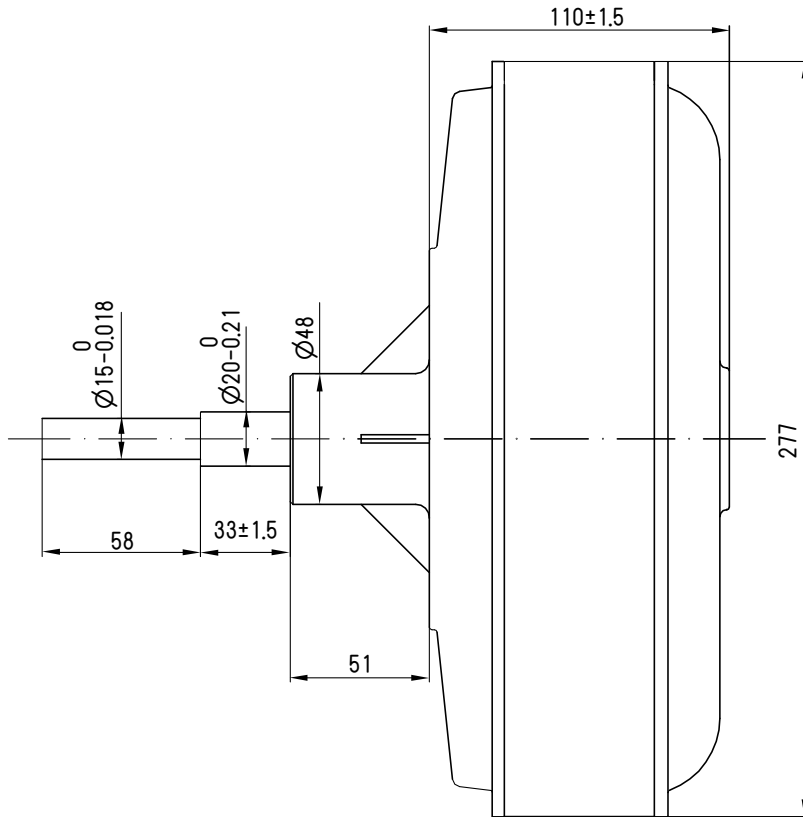


| REV | DESCRIPTION | DATE     | APPROVE |
|-----|-------------|----------|---------|
| P1  | PRELIMINARY | 20/04/03 | ZZF     |



| MOTOR SPECIFICATIONS |                |
|----------------------|----------------|
| VOLTAGE              | 110/220 VDC 1P |
| RATED SPEED          | 80-200 rpm     |
| RATED TORQUE         | 49Nm           |
| INPUT POWER          | 1.49 KW        |
| MAX OUTPUT POWER     | 1.35 KW Max    |
| IP RATING            | IP55 or higher |
| AMBIENT TEMP.        | <55°C          |
| RATED LOAD CURRENT   | 4.62A (3P)     |
| FULL LOAD CURRENT    | 5.78A (3P)     |
| DUTY                 | S1             |
| FREQUENCY            | 50-60 Hz       |
| NOISE LEVEL          | 50dB Max       |

|       |                     |                               |                 |
|-------|---------------------|-------------------------------|-----------------|
| Dept. | Technical reference | Created by                    | Approved by     |
|       |                     | Document type                 | Document status |
|       |                     | Title<br><b>MBL277AS-ID49</b> |                 |
|       |                     | Rev.                          | Date of issue   |
|       |                     | Sheet                         |                 |